

Rev. Kevin A. Karner
Pastor

Mrs. Claudia Bishop
Interim School Principal

Messenger

February 2016

Vol. 16 No. 2

IMMANUEL LUTHERAN CHURCH AND SCHOOL, BRISTOL, CONNECTICUT



OUR MISSION

The people of Immanuel Lutheran Church are living proof of the grace of God through salvation in Jesus Christ. Empowered by Christ, our mission is to reach out in love to those who have not yet responded to the Gospel that all may be united in Christ.

School Mission

The Mission of Immanuel Lutheran School is to provide a loving atmosphere of academic excellence for children while developing in them and their families a lasting relationship with Jesus Christ.

Immanuel Lutheran
Church and School
154 Meadow Street
Bristol, CT 06010
860-583-5649

cl.church@ilcs.org
www.ilcs.org

Congratulations!



*To Jared Krueger, Hannah Krueger and Gabriella Buonafede
for being accepted into the
Connecticut Music Educators' Association*

**NORTHERN REGIONAL MIDDLE SCHOOL MUSIC FESTIVAL
THE WEEKEND OF FEBRUARY 20TH!**

WE ALL DID IT!!!

Thanks to the generous contributions from Immanuel's members, the Helping Ministry, New England Synod, Holy Trinity Church - Terryville and many other groups, we have surpassed our goal for Harvest Pack!

Now comes the fun part - packaging all the meals to send to Haiti, to honor Maggie Karner's work there. Saturday, March 5th, we will have two sessions of packaging meals and will need volunteers to fill the tables. There will be a lot of weighing, measuring, and sealing the bags of meals, but most of all feeling good competition and fun. If you are between the ages of 13 and 113 years old, we invite you to join the fun!

The sign up sheets will be posted on the church office door. You can sign up for 1 hour, 2 hours or stay for both sessions. We will also be sampling the meals we are packaging. Bring your friends and reserve a table before they are all taken!

If you have any questions or would like to sign up by phone, call Joan Kirschner or Pat Wollenberg, at 860-584-0587.



Messenger is published monthly by Immanuel Lutheran Church and School for its members and friends.

Immanuel is a member of the Lutheran Church Missouri Synod.

Ed & Dee Krampitz
Newsletter Editors

(Deadline for submissions is the 15th of every month.)

**SUNDAY
DIVINE SERVICES**

8:00 a.m.

Holy Communion on the 1st, 3rd, & 5th Sunday of the month.

10:45 a.m.

Holy Communion on the 2nd, 4th, & 5th Sunday of the month.

ADULT BIBLE STUDY

9:30 a.m.

SUNDAY SCHOOL

9:30 a.m.



**WHEELCHAIR
ACCESSIBLE**

Worship Services are broadcast each Sunday at 1:00 p.m.
on

**WXCT RADIO
990 AM**

From the Pastor's Desk

“God’s Valentine”

How great is the love the Father has lavished on us, that we should be called children of God! And that is what we are! 1 John 3:1

February 14th means two things this year: Valentine’s Day, and the First Sunday in Lent. With that “dual” thought in mind, a church youth leader writes: “We had just taken the junior high kids home after Bible Club when I found a stray piece of paper on our front porch. I recognized the handwriting of Lisa, one of the girls. It was a handwritten list titled ‘My Best Friends.’ At the top of the list: ‘God.’”

“Lisa’s parents struggled to make ends meet. They lived in a tiny house down the road, but often took in relatives. Though surrounded by poverty, Lisa was rich in faith, counting God as her best friend.”

This Valentine’s Day, we can celebrate God’s great love in Christ Jesus. Unlike traditional valentine exchanges that can leave some of us feeling like empty-handed

Charlie Brown, God’s “Valentine” is for each of us. His love is everlasting (see Psalm 103:17) and endures forever (see Psalm 107:1). His love is so great it reaches to the heavens (see Psalm 57:10) and so powerful that it never fails (see Psalm 52:8).

Jesus Christ made God’s love visible as He walked to Calvary to carry our sins. As we meditate on His suffering for our sake during this upcoming Lenten season, we see Love so powerful it even overcomes death (see John 3:16). Our world doesn’t often acknowledge those in Lisa’s circumstances, but God’s love, without boundary or limit, loves her – and us – with a rich (see Psalm 145:8) and priceless love (see Psalm 36:7).

Join us for our midweek Lenten services at 10am or 7pm beginning February 10th (Ash Wednesday) as we celebrate being loved – and loving each other!

Pastor Karner
1 Thess. 5:23-24

May God himself, the God of peace, sanctify you through and through. May your whole spirit, soul and body be kept blameless at the coming of our Lord Jesus Christ. The one who calls you is faithful and he will do it. — 1 Thessalonians 5:23-24

~ ~ ~ ~ ~ **Women of Immanuel** ~ ~ ~ ~ ~

The tentative date of next meeting of the Women of Immanuel is Thursday, April 14, 2016 in the Parish Center. The spring meeting has been changed from March to April in hopes that it won't be snowed out.



LWML NEW ENGLAND DISTRICT CONVENTION April 8 & 9, 2016

The Lutheran Women in Mission- **New England District convention will be held April 8&9, 2016.** Women from throughout New England will gather together under the theme *Still Quenched by the Water*, based on John 4: 1. Important decisions will be made: adopting the mite goal for the next 2 years, election of officers, and selection of Mission Projects. (Immanuel Lutheran School's grant request will be on the ballot.) Our group is allowed one delegate, who will vote on these and other matters. The convention hotel, Holiday Inn in New London, CT, is in the heart of downtown. Among the area sites are the Historical Train Station, Nathan Hale's one room schoolhouse and a ferryboat ride to view 8 lighthouses and Forts Griswold and Trumbull.

The convention will be held before our next meeting, so if you are interested in being a delegate, call Gail Smuda at 860-628-8291.

LWML MISSION GRANT

RENOVATION OF JEM SEMINARY BUILDINGS \$120,000

The Lutheran Church in Nigeria (LCN) is the LCMS's oldest partner church in Africa, currently with approximately 80,000 members in 339 congregations. The seminary in Obot Idim, Jonathan Ekong Memorial (JEM) Seminary, continues to be an important partner for gospel proclamation, preparing

young men for the ministry in the LCN in the most populous country in Africa. The buildings on campus need extensive renovation to be safe and serviceable, and the Lutheran Women's Missionary League has pledged to share our mite offerings to support this effort so that more people are trained to bring the saving Gospel of Jesus Christ to others around the world. For more information on this and other 2015-2017 Mission Grants go to www.lwml.org and scroll down to "Mission Grants."

Let's Get Social! Follow Us Online for Daily Updates and Full-Time Fellowship.

In 2010, LWML launched its Facebook page which has more than 6,800 followers at present. In 2014, LWML launched its Twitter page which in the first three months grew to over 100 followers; presently almost 300. Videos have been continually added to YouTube (now also available at Google+) and late in 2014, Pinterest Boards were established to share links to devotions, Bible studies, crafts, and inspirational artwork.

THE FRUIT OF THE SPIRIT IS LOVE

Galatians 5:22

Joy is Love Smiling

Peace is Love Resting

Patience is Love Waiting

Kindness is Love Yielding

Goodness is Love Working

Faithfulness is Love Trusting

Gentleness is Love Accepting

Self-Control is Love Overcoming

Submitted by Laurie Grekula

Young at Heart

Our group of Immanuel members and friends, over age 50, does not hold any regular lunches during the winter months. Our group did donate to Harvest Pack for the March 5 event here packaging meals for Haiti in memory of Maggie Karner.

Our big annual Planning Committee will be meeting this month, weather permitting, on Tuesday morning, February 23 at 10:30 in the library. We hope everyone who signed up to be on this year's committee can attend and bring program ideas to the table. **We need a Daytrip Planner** if we want to take daytrips during the warm months of the year.

Perhaps you are newly retired and looking for something to do, we can use your help in various ways as we all have different skills; we are just volun-

teers helping each other to enjoy a mature life. Anyone can join us as we plan our activities for the rest of the year.

Looking for something to do? The Adult Fellowship group plays cards in the Parish Center at 1 pm on Monday afternoons; stop in and join the fun! Our homebound members would enjoy a visit with you if you call ahead; the office or Roberta Kuhr, our Parish Nurse, would know those members that would welcome a winter visitor.

Be sure to watch the weekly bulletin and our glassed bulletin board for notices and pictures of our events.



Shut-in Visitation

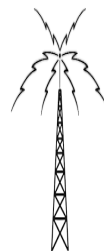
Box Tops

Remember, saving **Box Tops** helps our church and school. The first \$500 goes to PTO to fund things like school assemblies, field trips and the holiday fair for the kids. Beyond the \$500 the church gets, to add to our budget, which also needs help. **Box Tops** are easily found on many cereals, soups, cakes, and even baby carrots!

Remember to save your Box Tops!

RADIO MINISTRY — Help Wanted!!!

We are looking for new members for our recording team. Responsibilities may include: recording the 8:00 AM worship service; copying of the CD recording; transport of master CD to radio station by 12:45 PM. If you might be interested, see Don Smuda. No experience needed. *If Don can do it, so can you!*



**Police Appreciation Lunch
for Bristol's finest!
December 29, 2015**





Winter BBQ

Come join the Youth of Immanuel Lutheran in Bristol for our first annual – Winter BBQ.

Saturday, February 27th 4:30pm – 6:30pm
Immanuel Lutheran School GYM

Tickets: Adults - \$15.00
Children under 10 - \$10.00

Menu includes: Pulled Pork, Smoked Chicken, Winter Wieners, BRRR Burgers, Super Slaw, Major Mac Salad, and Bustin' Baked Beans.

Dessert: Brownies and Ice Cream

Drinks: Iced Tea, Lemonade, Water and Coffee



Beach Ball Volleyball
And Silent Auction on Themed Baskets



— *Proper BBQ attire requested* —

Monies raised will help our youth attend the National Youth Gathering in New Orleans this July.

— *Tickets will be sold between services and in the office* —

Contact Michele T. for more information 860-585-1196

JOIN US FOR SUNDAY MORNING and MID-WEEK SERVICES!



Oh give thanks unto the Lord for
He is good.

FEBRUARY WORSHIP SCHEDULE:

Holy Communion Services are in bold

Sunday, February 7 — **8:00am** and 10:45am

Ash Wednesday, February 10 — **10:00am** and 7:00pm

Sunday, February 14 — 8:00am and **10:45am**

Lenten Services, Wednesday, Feb. 17 — 10:00am and 7:00pm
Both services on Feb. 17 will be held in the Old School Basement

Sunday, February 21 — **8:00am** and 10:45am

Lenten Services, Wednesday, Feb. 24 — 10:00am and 7:00pm

Sunday, February 28 — 8:00am and **10:45am**

**Reminder: The weekly church bulletin and announcements are posted on-line on Immanuel's website:
www.ilcs.org**

**Immanuel welcomes
through the rite of Holy Baptism
Gracie Elizabeth Marcantonio,
daughter of Christine Marcantonio
Baptized on January 31, 2016**

ALTAR FLOWER CHART FOR 2016



There is a new flower chart for 2016 in the hallway across from the coat rack. If you would like to put flowers on the altar in memory of someone or to celebrate a special occasion, just put your name on that date with your phone number or call Pat Wollenberg, 860-584-0587 with any questions or requests.

*Thank you,
Pat Wollenberg*

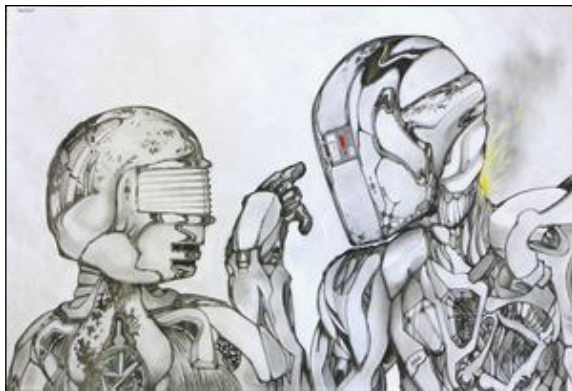
**ILS SKI CLUB HAD A GREAT TIME ON THE SLOPES AT MOUNT SOUTHTON!
*WAY TO GO!!!***



Shown, left to right, are: Brooke Manchester, Mike Theriault, Maggie Theriault, Morgan Hebert, Ethan Dubois, Michele Dubois and Alexandra Dubois. Not shown are: Deb Krueger, Jared Krueger, Hannah Krueger, Cole Krueger, Charlie Radcliff, Kurt Radcliff and Gretchen Radcliff.

We ski Fridays from 3 to 8 pm at Mount Southington

CONGRATULATIONS



Valya Rindfleisch, a Bristol Central High School student, won honorable mention in Drawing and Illustration for his work "You Tell Me," in the 27th annual Connecticut Regional Scholastic Art (CRSA) Awards competition and exhibition held recently at the University of Hartford's Hartford Art School.

Lenten Worship

Lent begins on February 10 with Ash Wednesday Services

at 10:00 am and 7:00 pm.

(Holy Communion at both services)



Lenten Service soups

Starting on Wednesday, February 17, different groups and individuals will be making soups for our mid-week Lenten service lunches. These lunches will follow the 10am mid-week Lenten services. Come and join us for a wonderful time of food and fellowship.

During Lent we prepare our hearts to receive our crucified and risen Lord by...

Decorating the church using violet. Violet, the color of royalty and repentance, is the color for Lent. In biblical times, violet dye was very expensive and could only be purchased by royalty or the very rich. The people of God our His royal priesthood (1 Peter 2:8-9). We decorate the church in the royal color of violet for our times of repentance – turning away from our sins and turning toward Christ for His mercy and forgiveness.

No longer singing Alleluia. Alleluia is a Hebrew word that means “Praise the Lord.” It appears often in the Psalms and is a joyous expression of faith in God. During Lent, we do not use this joyous response in order to focus on our need for repentance and faith.

No longer singing the Gloria in Excelsis. Just as in Advent, so in Lent we give up singing the joyous Hymn of Praise. We do this to focus our worship on repentance.

Lent is a season that has a number of interesting customs:

Ash Wednesday and the Imposition of Ashes. Lent always begins 40 weekdays before Easter on Ash Wednesday. The name comes from the ancient custom of the imposition of ashes. The pastor dips his thumb into some ashes (traditionally made from the palm branches from the previous Palm Sunday) and



LENTEN WORSHIP

marks an ashy cross on each person’s forehead while saying, “Remember that you are dust, and to dust you shall return.” This custom uses the biblical image of ashes (Job 42:6) to remind us that we, too, shall die and therefore need forgiveness from Jesus.

Fasting. Fasting is giving up eating at a particular meal or time in order to devote that time to prayer and meditation on the Word of God. Jesus directed that His disciples would fast (Matthew 6:16-18), and the Small Catechism says that fasting is “fine outward training” before taking the Lord’s Supper. Many Christians use Lent as a special time of fasting – especially on Fridays in remembrance of Good Friday when Jesus died on the cross.

Giving something up for Lent. It’s similar to fasting, except instead of a meal a person might “give up” any favorite item: a toy, television, desserts, etc. The idea behind giving something up for Lent is to be reminded to pray, to study God’s Word, and to think of Jesus’ sacrifice when you miss the thing that you have given up.

Midweek services. Many churches observe Lent with special midweek services. These extra times of worship during the week help us to hear God’s Word and prepare us to observe Holy Week and celebrate Easter.

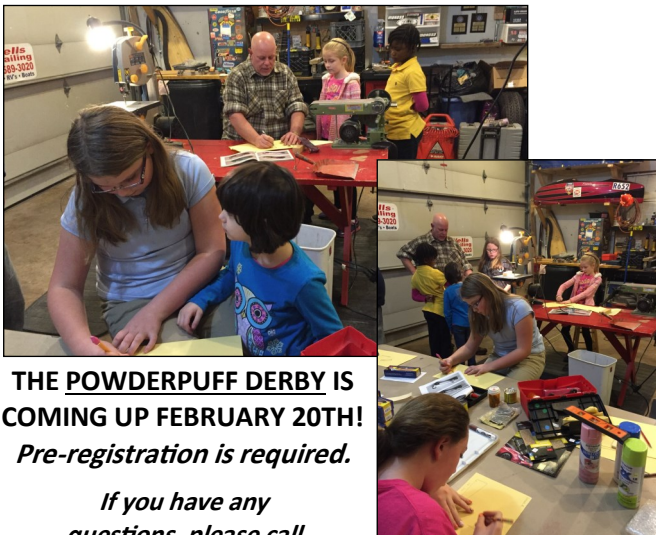
~ Scout News ~



Cheryl Yetke, Director of "Meals for the Needy" program at Zion Lutheran Church in Bristol attended and thanked our girls personally and told stories of those who so graciously received our blankets and hats. On January 20 we made an additional 10 blankets and have used almost all of the material that had been donated. Also, she invited our girls to the Volunteer Appreciation Lunch at noon on April 15 at Nuchie's (she will be sending us an invitation). She was so very appreciative of our work — she just kept hugging us the whole time she was there. God has truly blessed our work here at Immanuel Lutheran Church & School. I wanted you thank you all so much for your support and help!

Trina Theriault

POWDERPUFF DERBY CAR BUILDING
was great fun! **THANK YOU, MR. WELLS!**



THE POWDERPUFF DERBY IS COMING UP FEBRUARY 20TH!
Pre-registration is required.

If you have any questions, please call

Becky Wells 860-916-3621 or
Trina Theriault 860-384-1530.
Troop #66072



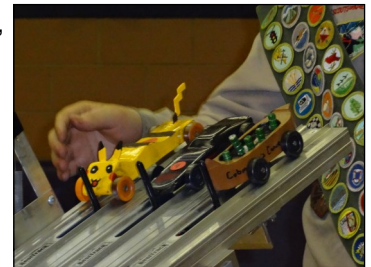
Pinewood Derby results

On Saturday, January 23 the Cub Scouts of Pack 21 braved the snow to compete in their annual Pinewood derby. There were a lot of cool designs this year and all cars made it down the track (with the help of gravity of course).

The results for the Tigers (first graders) are
3rd Place-Anthony Keddy,
2nd Place-Ethan Dubois,
First Place-Chadd Wentland,

For the Wolves (2nd Graders),
3rd Place-Nicholas Dunn-Milkowski
2nd Place-Cole Krueger
Champion-Rocky Bonin

For the Webelos (4th and 5th graders),
3rd Place-DJ Cyr
2nd Place-Logan Jackson
Champion-Adam Krueger



For the all Pack Race, although Cubmaster Krueger's Canoe looked real fast, all of the age group winners left him looking for his paddles. Chadd Wentland was the fastest car followed by Rocky Bonin and Adam Krueger. Thomas Madigan raced in his last Pinewood derby as a Cub Scout and came away with the Most Creative award.

Cubmaster Krueger



February Calendar

Activities

- 1, 8, 15, 22 - Adult Fellowship
- 3, 9, 17, 24 - Senior Choir
- 4, 11, 18, 25 - The Emmaus Walkers
- 9, 16, 23 - Walk & Talk
- 10 - Ash Wednesday
Board of Finance Meeting
- 11 - Sound of Music Production Meeting
- 12 - BBT Quilt Guild
- 14 - Valentine's Day
VBS Bake Sale
- 15 - Presidents' Day
- 16 - IL Foundation

- 17, 24 - Mid-week Lenten Services
- 18 - Photo Club
- 23 - Young at Heart Planning meeting
- 27 - Youth Group Winter BBQ

These activities are a sample of what was posted on Immanuel's online calendar as of the publishing of this edition of the *Messenger*. To see the most up-to-date listings of all activities at the church and the school, log onto the church website at www.ilcs.org and click on **Calendar** at the top of the page.

HAPPY BIRTHDAY

Mon	Tue	Wed	Thu	Fri	Sat
1 Nicole Tessman	2 Nancy Pease Logan Williams	3 Edward Phillips Kurt Radcliff	4 Dorothy Johnson	5	6 Jared Jankowski Tamara Lindstrom Robert Neumann Jessica Triplett Ella Woike
7 Kristen Boutin	8 Michael Phillips Kevin Read Tammy Thormahlen	9 Rollin Lee David Newman Ava Werner Brooke Werner	10 Gertrude Jensen David Peplau	11 Robert Bayer Celine Kissner Joshua Mitchell Sydney Therrien	12 Susan Rich Judith Rodgers Sandra Tonn
14 Paula Helming Ashley Romaniello Haley Romaniello	15 Caroline Bayer Julie Follo Randy Neumann Jessica Romaniello Irma Schaffrick	16 Cynthia Dell'Aera Jill Therrien Kenneth Tonn	17	18 Jon Heidorn Amanda Wolfe	13 Karin Hauer
21 Donna Hamelin Linda Hogan Jonathan Kane	22 Jan Blaschke Mary Sylvia	23 Michael Girard	24 Marissa Cruz	25 Catherine Kane	19 Kurt McCorriston
28 Joan Hermann	29			26	20 Jeffrey Bergeron Linda Neumann Evelyn Palmisano Deborah Schmelder
					27





NON-PROFIT
 ORGANIZATION
 U.S. POSTAGE PAID
 BRISTOL, CT 06010
 PERMIT NO. 382

IMMANUEL LUTHERAN CHURCH
 154 MEADOW STREET
 BRISTOL, CT 06010
 RETURN SERVICE REQUESTED

Messenger 