

Rev. Kevin A. Karner  
Pastor

Rev. Robert Beinke  
Assoc. Pastor

Deborah Krueger  
School Principal

# Messenger

June 2025

Vol. 25 No. 6

IMMANUEL LUTHERAN CHURCH AND SCHOOL, BRISTOL, CONNECTICUT



## OUR MISSION

The people of Immanuel Lutheran Church are living proof of the grace of God through salvation in Jesus Christ. Empowered by Christ, our mission is to reach out in love to those who have not yet responded to the Gospel that all may be united in Christ.

## School Mission

The Mission of Immanuel Lutheran School is to provide a loving atmosphere of academic excellence for children while developing in them and their families a lasting relationship with Jesus Christ.

**Immanuel Lutheran  
Church and School**  
154 Meadow Street  
Bristol, CT 06010

860-583-5649

[www.ilcs.org](http://www.ilcs.org)



*Immanuel's sewing group has met for one month, and we are on our way to making quilts. A special thank you to Brian Winter for the donations from his late sister Gail Roberts.*



## To our readers:

With summertime typically being a slow time newswise, the next issue of the **Messenger** will be a combined **July/August issue**. Please keep this in mind when submitting items for publication.

– Ed & Dee Krampitz, Editors

# Messenger





Messenger is published monthly by Immanuel Lutheran Church and School for its members and friends.

Immanuel is a member of the Lutheran Church Missouri Synod.

Ed & Dee Krampitz  
Newsletter Editors

Deadline for submissions is the 25th of the month.

### SUMMER WORSHIP SCHEDULE

June – July – August

#### SUNDAY

#### DIVINE SERVICE

with Holy Communion  
9:00 A.M.

— (Live Streaming) —  
~ ~ ~

FELLOWSHIP COFFEE  
10:15 A.M.

~ ~ ~

ADULT BIBLE STUDY  
10:30 A.M.

— (Live Streaming) —



WHEELCHAIR  
ACCESSIBLE

Worship Services are  
broadcast each Sunday  
at 1:00 p.m. on

**WNTY Radio**

**AM 990**

&

**FM 96.1**

and online at

KoolOldiesRadio.net



## From the Pastor's Desk

# “Holy, Holy, Holy”

“Holy, holy, holy! Lord God Almighty! Early in the morning our song shall rise to Thee; Holy, holy, holy, merciful and mighty! God in three Persons, blessed Trinity!

Holy, holy, holy! All the saints adore Thee, Casting down their golden crowns around the glassy sea; Cherubim and seraphim falling down before Thee, Which wert and art and evermore shalt be.”

Do you love a good mystery? In a movie, a television show, or a good book, we like to join in, to participate in solving the puzzle. We piece together the clues and reason it all out. Certain that we have the solution even before the story’s detective does, we boast, “I could write this stuff!” But then comes that unexpected plot twist that destroys all of our theories.

Our faith has mysteries of its own. We don’t need to figure them out – even if we could – because many of these mysteries are revealed in Scripture. The apostle Paul liked to talk about mysteries, perhaps in response to the Greek and Roman “mystery religions,” in which only those who were properly initiated were let in on the sacred secrets. In contrast, the apostle openly announces the mysteries of our faith, such as the mystery that is Christ in us, our “hope of glory” (Colossians 1:27b). It was a long-hidden mystery, now revealed by the Holy Spirit, that Gentiles are fellow heirs of salvation (see Ephesians 3:6). There is the yet-to-be-experienced mystery of the Last Day, when our mortal bodies will be dressed in immortality (see 1 Corinthians 15:51). Most wonderful of all is the mystery of our Lord’s incarnation and exaltation,

which Paul describes as “great indeed” (1 Timothy 3:16a). Even though these mysteries of salvation and immortality are revealed and proclaimed from the rooftops, we can only accept them on faith because such wonderful things can never be grasped by human reason.

There is another mystery, the wonderful and awesome mystery into which we are baptized, the Name of the Father and of the Son and of Holy Spirit. God claims us with His holy Name, the Name of the Holy Trinity. There are no clues we can assemble, no plot we can reason out, to understand how our great God is the thrice holy Three in One. We can only confess as we do in the creeds: “I believe.” The Triune God who exists apart from time acted in time and history in Christ to save us. For that mystery we will give thanks and praise to our Triune God for all eternity, joining the saints and angels in endless praise: “Holy, holy, holy is the Lord God Almighty, who was and is and is to come!” (Revelation 4:8b).

THE PRAYER: Almighty God, Three in One, we have been baptized into Your holy Name. By the power of Your Spirit, enable us to live as Your children, with faith toward You and in love and service toward others. AMEN.

Pastor Karner

1 Thess. 5:23-24



*May God himself, the God of peace, sanctify you through and through. May your whole spirit, soul and body be kept blameless at the coming of our Lord Jesus Christ. The one who calls you is faithful and he will do it. — 1 Thessalonians 5:23-24*

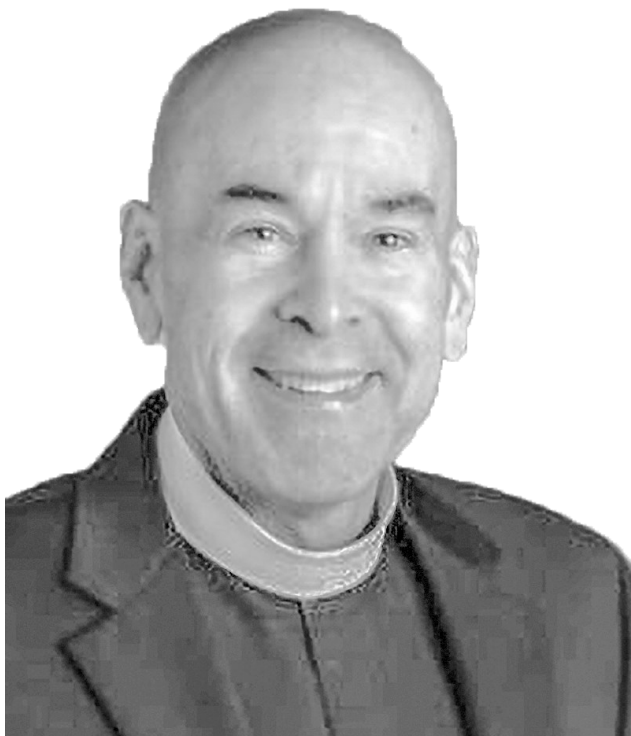


## Farewell Luncheon for Pastor and Renee Karner

**Sunday, July 27, 2025, at 12:00 pm**

Members of the congregation and friends are invited to gather in the gymnasium as we bid farewell to our under shepherd and friend, Pastor Karner, and his dear wife Renee, as they leave us to begin their lives in retirement together.

**This will be a catered affair. To help us to plan accordingly, please RSVP by June 30<sup>th</sup> by emailing Rhoda Lange at [Rhoda.lange231@gmail.com](mailto:Rhoda.lange231@gmail.com) or by calling (860) 543-5992.**



In the month of June, we will also be collecting donations towards a special farewell gift for Pastor and a separate gift for Renee, in gratitude for their faithful service and dedication.

Contributions may be placed in the **Parish Ministries** box in the Church office during business hours or dropped into the **Christian Mart** "blue honor box" in a clearly marked envelope at any time.

## Young at Heart

We had about 50 folks at our May gathering, for our Gnazzo Chicken and enjoyed Tom Dickau's presentation on our Bristol Churches especially all the Lutheran churches. We have invited Tom to sell Bristol Historical Society ornaments at our German Fest in September.

Looking forward to the summer months, there will be no July Lunch but we will have a COOL SUMMER LUNCH on Thursday, August 7 at 11:30 in the OSB when we ask everyone to bring a cold summer item for our buffet. Eric Larson will share his new book on the King Phillips War in New England.

Hope to greet you in church at our only service at 9:00 this summer.



The Walk & Talk group completed the first set of sandwiches for "Feed the Need Northeast" and have decided to make it a monthly endeavor.

Please join us the third Tuesday of each month at 9:30 to make sandwiches, friends and fun.

— Jill Dolan





## ~~~~~ Church News ~~~~~

### Immanuel welcomes through the rite of Holy Baptism

***Gillen and Raye Boucher***

**Baptized on May 18, 2025**

Family of Scotty Boucher and Cassie Nowak

***Joaquin and Cheyenne Plaza***

**Baptized on May 25, 2025**

Family of Jonathan and Cassandra Plaza

***Beckett Swicklas***

**Baptized on May 25, 2025**

Family of Taylor and Adam Swicklas



### CALLED HOME TO HEAVEN



Marilyn A. Triplett

July 24, 1939 — March 8, 2025



Please join us weekly at the Parish Center.

**CARDS** Every Monday at 1:00 pm. Open to all adults. Please join us for an afternoon of laughs.

**Walking** every Tuesday (*no walking on the third Tuesday of the month*) at 9:00 weather permitting, and **Walk and Talk** at 9:30 am. (**Third Thursday is Feed the Needy.**) All are welcomed. We are a fun group – we even laugh! Snacks and coffee provided. Please join us, we'd love to see you.

### Women of Immanuel

Did you know that the Women of Immanuel are all about community, service, and making a difference? We support local and global projects and the Lutheran Women's Missionary League (LWML) through Mites for Mission Grants and so much more. As Lutheran women we are on a mission to joyfully proclaim Christ, support missions, and empower all women to honor God by serving others.



**On Saturday, June 14th at (11:00 am in the OSB) we are having a potluck. Women of all ages are invited to join us – come connect and see what we're all about!**

If you have any questions, please reach out to Claudia Bishop, or Carol Maron for more information.

**See you there with your mites and your potluck dish for our buffet tables (beverages will be provided).**

#### Women's Bible Study

Tuesday, **June 17** at noon.

Bring a lunch, and join us for a Bible Study in the Parish Center.



We will be having a **Lunch at BARC** on Tuesday,  
June 10, at 12:30 pm.

*We are encouraging men to please join us.*

**Reminder: The weekly church bulletin and announcements are posted online on Immanuel's website: [www.ilcs.org](http://www.ilcs.org)**

Mark your calendar: The next **Voter's Meeting** will be Monday, July 28, at 7 pm in the church sanctuary.



## THE IMMANUEL LUTHERAN FOUNDATION

### Call for Grant and Scholarship Applications

Thanks to a generous gift, the Immanuel Lutheran Foundation has been serving diverse needs of the Immanuel Lutheran Church since 1997. The “General Fund” has provided financial support through a *Grant Application Process* to do those important “non-budgeted” things “for which we never seemed to have the money”.

All this for one  
reason.

*To provide  
continuing support  
for the Ministry of  
our Lord and  
Savior Jesus  
Christ through the  
Immanuel  
Lutheran Church  
here in Bristol.*

While the Foundation’s General Fund earnings are directed to the support of *non-budgeted items*, the earnings of the **Westfall I and II Endowment Funds** established some years later contain provisions to award five scholarships each year. One scholarship is offered to an Immanuel member entering “Preaching and Teaching” ministries of the Lutheran Church Missouri Synod. Four scholarships are offered to members of Immanuel and/or graduates of the Immanuel Lutheran School enrolled in an accredited College or University with a preference given to applicants aspiring to enter the ministry, or a career in medicine, law, or engineering.

### *It’s Time!*

**2025 Grant Applications** for the General Fund are being accepted now. Application Forms are available in the Church Office and returned there when complete. **Westfall Scholarship Applications** are also available in the office and must be completed and returned to the office no later than Sunday, June 15, 2025.

The Directors begin the Grant Review Process in March and continue throughout the year as funding remains available.

Questions? Pick up a Foundation Brochure in the Church/School Lobby or contact one of the Directors; Bill Wentland, Andy Helming, Bob Wollenberg, Diane Read, Warren Kirschner.

### IMMANUEL LUTHERAN CHURCH SCHOLARSHIPS

Scholarship Applications are available in the church office:

We are accepting applications for Immanuel Lutheran Church Scholarships.

Scholarships are awarded to members of Immanuel Lutheran Church or graduates of Immanuel Lutheran School.

Applications are due on **Sunday, June 15, 2025** in the church office.





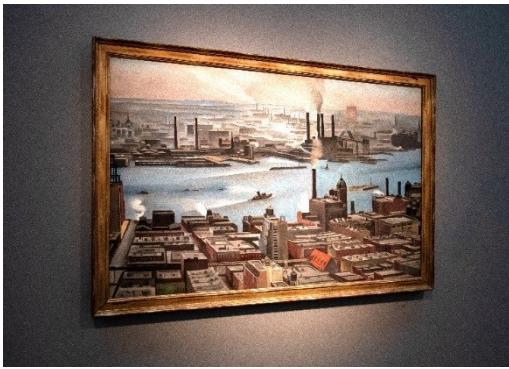
## The Immanuel Lutheran Church Digital Photography Club

# A Day at the Museum

### *Photorealism in Reverse!*

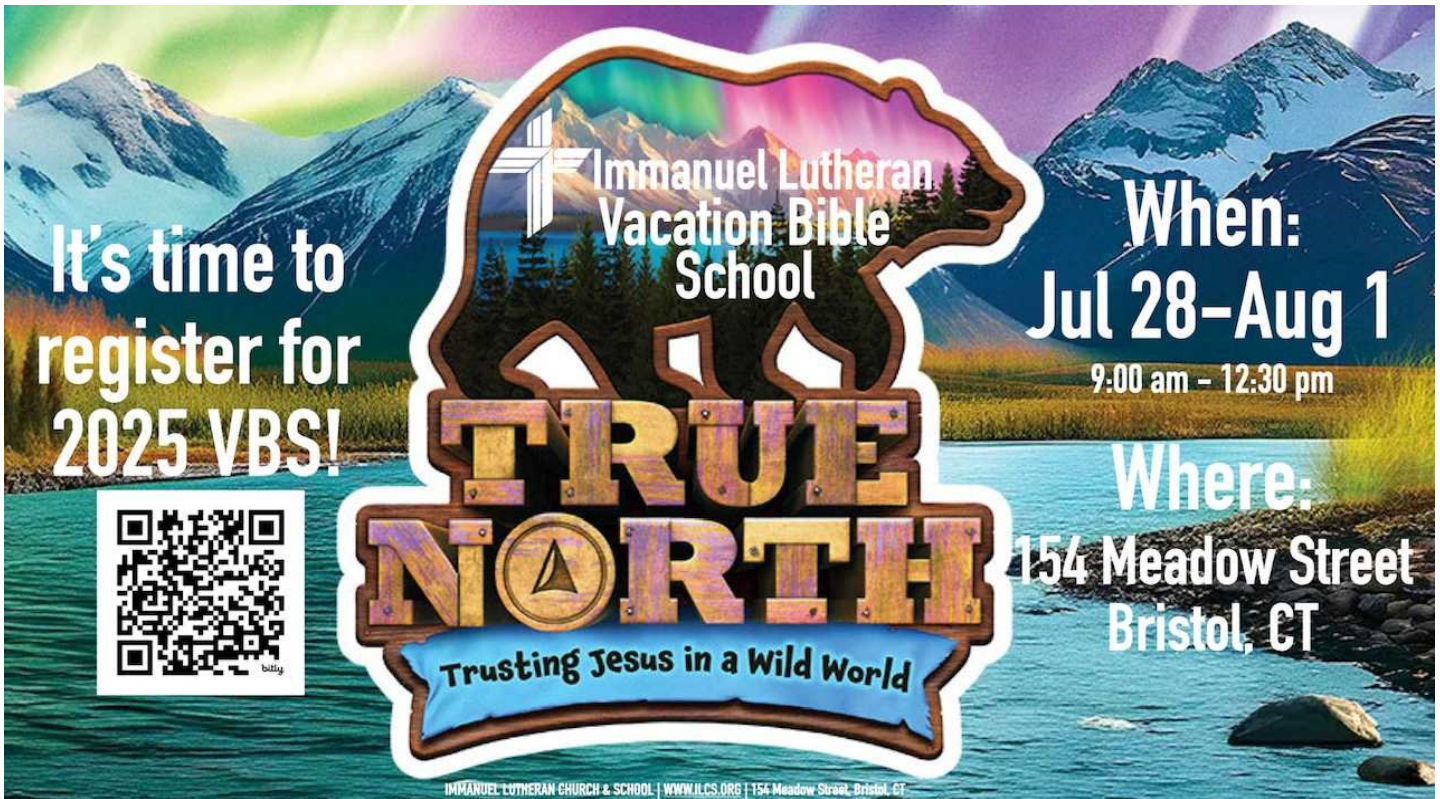
*Photorealism* is a genre of art in which an artist studies a photograph and then attempts to reproduce the image as realistically as possible in another medium. If you're not an artist using oils and canvas, why not reverse the process using a camera? As photographers, we are all saying, "Look at this". We're trying to communicate information or elicit an emotional response, or both! This month it's Communication. The photographs below illustrate somewhat of a departure from what many expect to see in an art museum. It's worth noting that flash is not permitted, spot lighting on most paintings, and likely a dim ambient lighting creates uneven lighting that present a problem for cameras unable to effectively deal with those conditions.

*Photos taken at the New Britain Museum of American Art.*



**Join us!** *We meet on the First Tuesday of every month except July and August at 7:00pm in the Parish Center.*





**It's time to register for 2025 VBS!**

**Immanuel Lutheran Vacation Bible School**

**When: Jul 28–Aug 1**  
9:00 am – 12:30 pm

**Where: 154 Meadow Street  
Bristol, CT**

**TRUE NORTH**  
Trusting Jesus in a Wild World

IMMANUEL LUTHERAN CHURCH & SCHOOL | WWW.ILCS.ORG | 154 Meadow Street, Bristol, CT

**Ages**  
**Prek 4 - 6th grade**

**Register on line @**

<https://www.myvbs.org/ImmanuelLutheranBristolCT>

and

Facebook event page here: <https://www.facebook.com/share/1AEBn2aAkW/>

## HONOR & REMEMBRANCE



### Ornaments For Sale \$20

Available for sale at Bristol Bazaar, City True Value, & The Memorial Military Museum, located at 98 Summer St.

Purchase by email available also at [MMOrnaments@gmail.com](mailto:MMOrnaments@gmail.com).

All proceeds benefit the Memorial Military Museum by providing funding for more programs and helps us to honor veterans.



## Orphan Grain Train News

Our shipment to Moldova was pushed back from May 19 to June 2 due to the lack of a ship for the container. We received over 31,000 meals from the Harvest Pack ministry and plan to ship them to the areas in the midsection of the country hit by storms and floods, along with other supplies to aid in recovery. In May, we gave out 139 medical and other items with a used value of over \$20K to those in need from the area. ~ Paul



## ~ ~ ~ ~ ~ School News ~ ~ ~ ~ ~

### **From the Principal's Desk**

Dear Immanuel Lutheran Church Members and Friends,

May has been filled with many activities and field trips for our students. This month, our middle school students had a wonderful time in Washington D.C. with Trinity Christian School in Keene, NH. We went with a Christian tour company that gave our students a Biblical worldview of all the buildings, monuments and memorials we visited. Everyone had a great time!

We celebrated Ascension Day with our annual biodegradable dove balloon release. Pastor Karner gave the students a mini lesson on Ascension Day and then we watched the balloons disappear into the clouds just as Jesus did when he ascended into heaven.

Enrollment is still underway for the 2025-2026 school year and we are thankful for our wonderful families who remain committed to our school and see the value in the Christian education we offer. We also pray that God will lead new families to us and continue to bless our mission here at Immanuel.

In Christ,  
Deborah Krueger





---

## Gardening News by Alice Helming

# Happy National Pollinator Month

Recently the 4<sup>th</sup> and 5<sup>th</sup> graders at ILS summed up what they learned from reading the book, *What If There Were No Bees*, by Susan Slade. Bees are an important part of our food chain. As they fly from flower to flower gathering nectar and pollen to feed their young, they are pollinating the plant, allowing seeds and fruits to develop. Some plants are pollinated by the wind, but others require pollinators to do the job. There are many kinds of pollinators besides the domesticated honeybees which include butterflies, flies, wasps, dragonflies, bumble bees, beetles, lizards, moths, and hummingbirds. Even shrimp can pollinate seagrass as they swim from plant to plant. Can you imagine a life without pollinators since 1/3 of the food on your plate is made possible by pollinators. So be nice to pollinators!

How can you help pollinators? Doug Tallamy, an entomologist and professor at the University of Delaware explains it best in his books *Bringing Nature Home* (2006), *Nature's Best Hope* (2020), and newest book, *How Can I Help?* He states that every yard can make an ecological difference by reducing the lawn, planting native plants and not using harmful pesticides.

Alarming news has been reported early in 2025 from back yard and commercial apiaries that up to 50% of healthy, well managed honeybee colonies have suddenly died off or disappeared. Many samples have been taken and sent to the U.S. Geological Survey Bee Lab in Beltsville, Maryland to determine the cause as soon as possible.

Interestingly a recent article "Born to Be Wild" by Susan Freinkel was published in the April/May issue of the *Smithsonian* magazine. She reports on the work of Sam Droege, a 67-year-old wildlife biologist, who leads research at the Maryland Bee Lab along with the important work being done by the CT Agricultural Experiment Station in New Haven, CT. Sam Droege reports that native bees deserve more credit since they pollinate 75% of our cultivated wild food. Tomatoes, eggplants, kiwis, and blueberries are all pollinated by native bees. This article states that there are an estimated 3,600 species of native bees in the U.S., more than in any other country in the world. But so far only 600 of them have been identified and evaluated for their chance of extinction. That's mostly because native bees are hard to study because of their size, time required to collect data and major losses of habitat.

So, have you become a "Beeple" (bee-people) yet? Students at ILS are doing their part to support all pollinators by creating a habitat in their annual flower and vegetable garden and new Meadow Garden on Meadow St. which will be soon buzzing with life! The students also have germinated and nurtured native perennials, allowing each student to take home a native seedling to start their own backyard habitat. So always be nice to pollinators!!



Christina Richardson - Infant Lead Teacher, is currently on bedrest. Immanuel Lutheran Infant/Toddler programs put together an after-school Baby Shower for her.





Camp Pineshore  
Est. 1947  
*Jesus at the Center*

A Bible Camp and Campground of the  
Lutheran Church—Missouri Synod  
**Summer Youth Camps: 2025**

Senior High Long Weekend (Thurs-Sun) Overnight Retreat  
June 19-22: \$150

Sunday School Weeklong (Sun-Fri) Overnight Camp  
July 27-August 1: \$400 Open to campers going into Grade 3-6

Junior High Weeklong (Sun-Fri)  
Overnight Camp  
August 3-August 8: \$400 Open to campers going into Grade 7-9

**Location:**  
**12 Camp Pineshore Rd.**  
**Westminster, MA**

**Mailing Address:**  
**750 Rindge RD**  
**Fitchburg, MA 01420**



## What is Camp Pineshore Bible Camp?

- **Jesus at the Center:** Jesus is the reason for Camp Pineshore Bible Camp. Campers will learn solid Biblical teaching that will help them grow in faith toward God and love toward their neighbors. Our camp groups are led by Camp Chiefs who are all pastors in the Lutheran Church-Missouri Synod.
- **Christian Friends:** You never forget camp buddies. Our campers look forward to camp all year because that's where there friends are. They also learn that they are not alone, that there other young Christians who share the same faith.
- **A Safe Environment:** Camp Pineshore abides by all the regulatory standards established by the Massachusetts Department of Public Health. We employ trained lifeguards and camp nurses to keep our campers safe. All staff and volunteers that work with children are required to have multiple references, orientation training, and background checks.

Camp Pineshore Email: [messiah.fitchburg@gmail.com](mailto:messiah.fitchburg@gmail.com)  
Pastor's Email: [davidjacoby65@hotmail.com](mailto:davidjacoby65@hotmail.com)

## JUNE 2025 BIRTHDAYS

Sun	Mon	Tue	Wed	Thu	Fri	Sat
<b>1</b> Evan Foley Jack Lusi Paul Ryskowski Joel Sonstroem <b>8</b> Ruth Stewart   <b>15</b>   <b>22</b> Leslie Foley   <b>29</b> Lisa Catanzaro Sandra Cleveland Shawn Dennis Connie Glidden Laura Hamelin Karen Hebert	<b>2</b> Daniel Wall     <b>9</b> Claudia Bishop Abigail Bourgoin   <b>16</b> Christopher Pacitto   <b>23</b> Henry Kuharski, Jr.   <b>30</b> Tami Benvenuto Alice Bielert Gianna Fabrizio Carrie Palmisano Kacie Therrien	<b>3</b>     <b>10</b> Andrew Dubois Haylee Kissner   <b>17</b>   <b>24</b>   	<b>4</b> Jaime Ryskowski     <b>11</b>     <b>18</b> Irelynn Plaskett Mel Schab Bev Zahnke  <b>25</b> Marcus Lopisi Doreen Tessier	<b>5</b> Linda Kuharski     <b>12</b> Aubrey Bennett Alexa Bugryn Rickard Darm Jacqueline Holcomb Peter Koch Pamela Mockler Gabriel Scarpati <b>19</b> Heidi Karner Pat Wollenberg  <b>26</b> Connie Bielby Benjamin Jabs	<b>6</b> Lynn Donahue Richard Lutz Bethany Swicklas   <b>13</b> Mavis Charles-Durham Linda Sonstroem   <b>20</b> Walter Riemer   <b>27</b>	<b>7</b> Lois Koch     <b>14</b> Patricia Kahle     <b>21</b> Liliana Delaney Carley Klemyk Julia Klemyk Barry Sonstroem Nancy Tower  <b>28</b> Lisa Bugryn



**Happy  
FATHER'S  
DAY**  
**JUNE 15**



NON-PROFIT  
ORGANIZATION  
U.S. POSTAGE PAID  
BRISTOL, CT 06010  
PERMIT NO. 382

IMMANUEL LUTHERAN CHURCH  
154 MEADOW STREET  
BRISTOL, CT 06010  
RETURN SERVICE REQUESTED

Messenger

